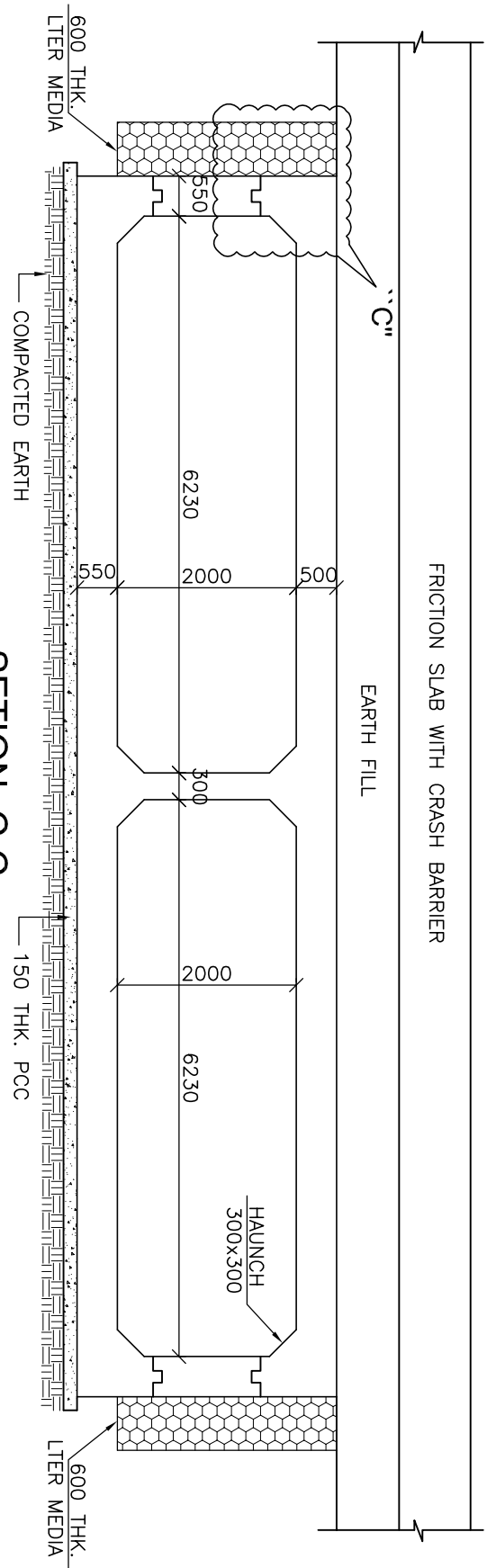
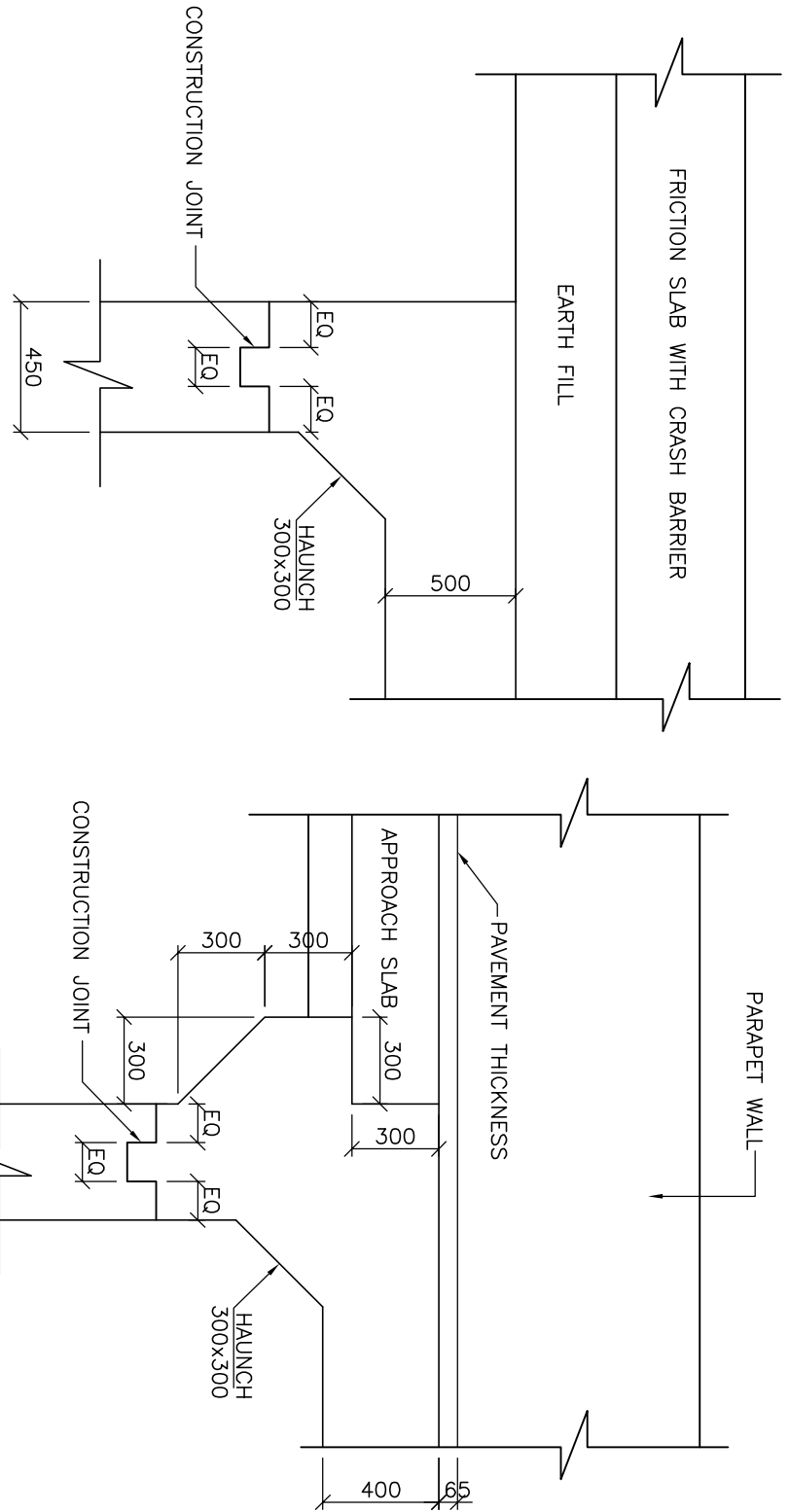


VIEW A-A
SCALE-1:75

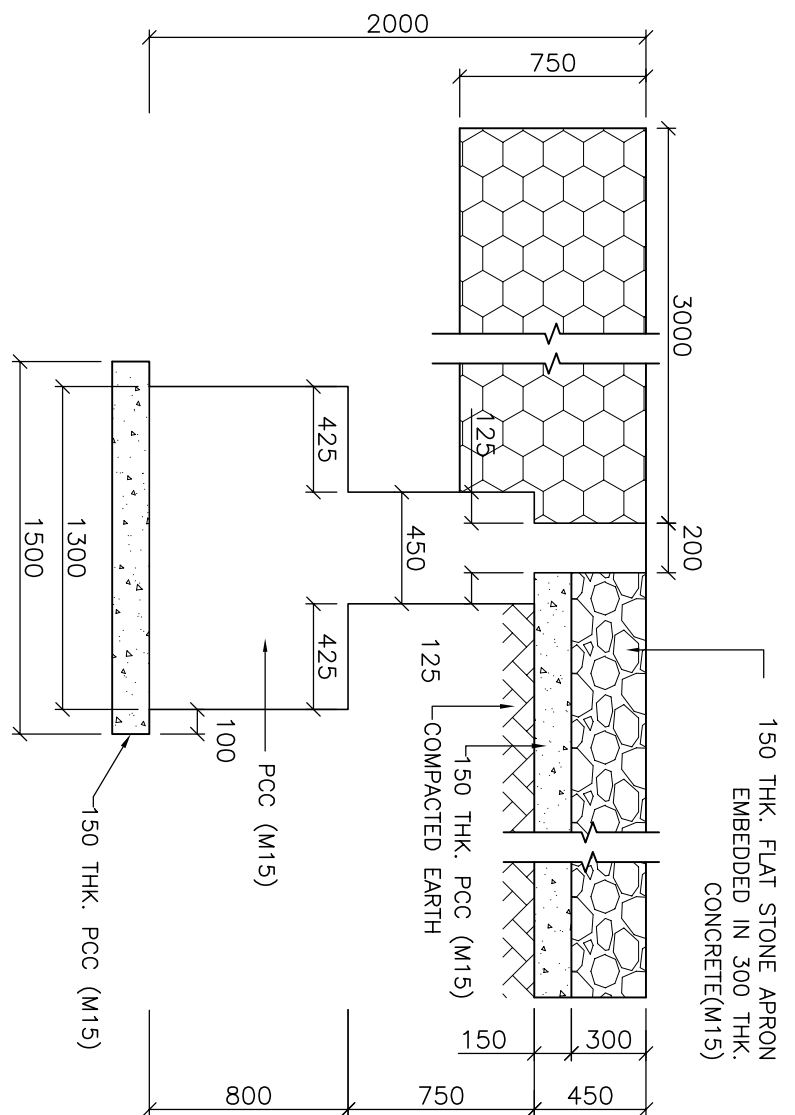


SECTION C-C
SCALE-1:75

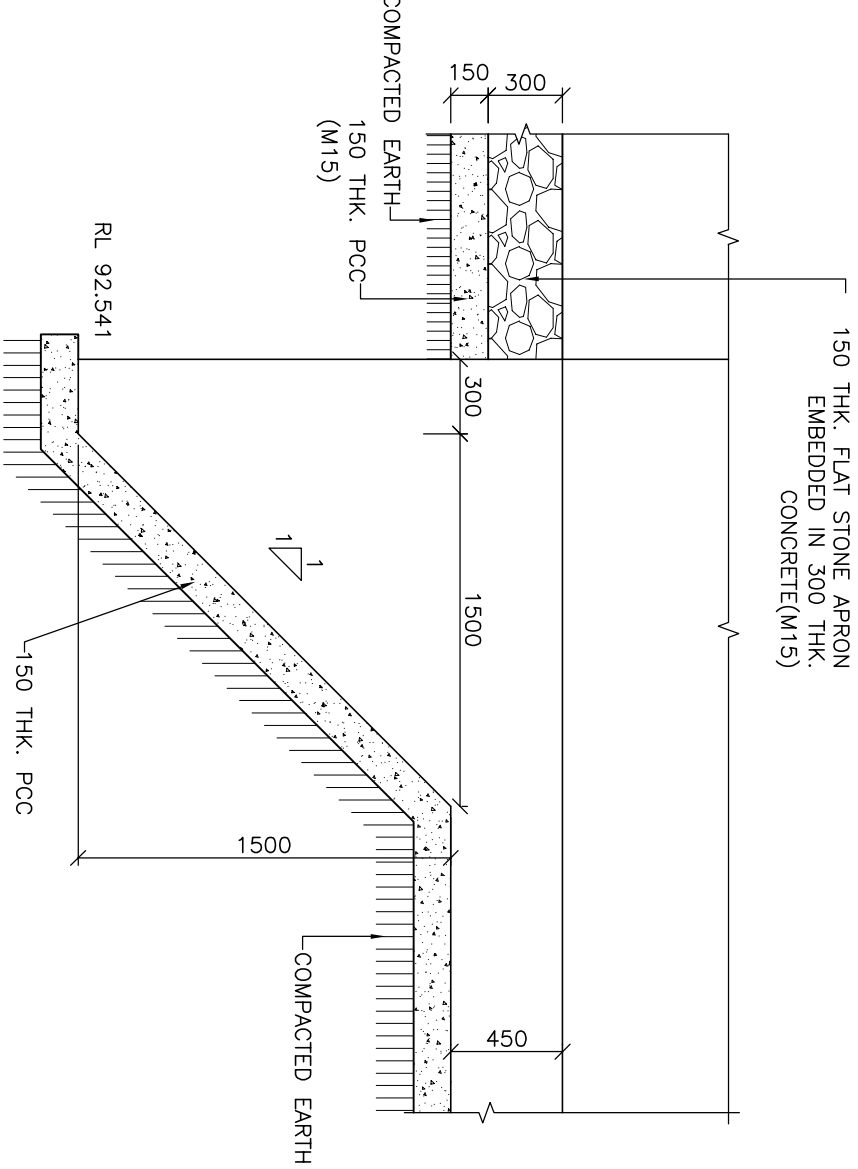


DETAIL ``A``
SCALE-1:25

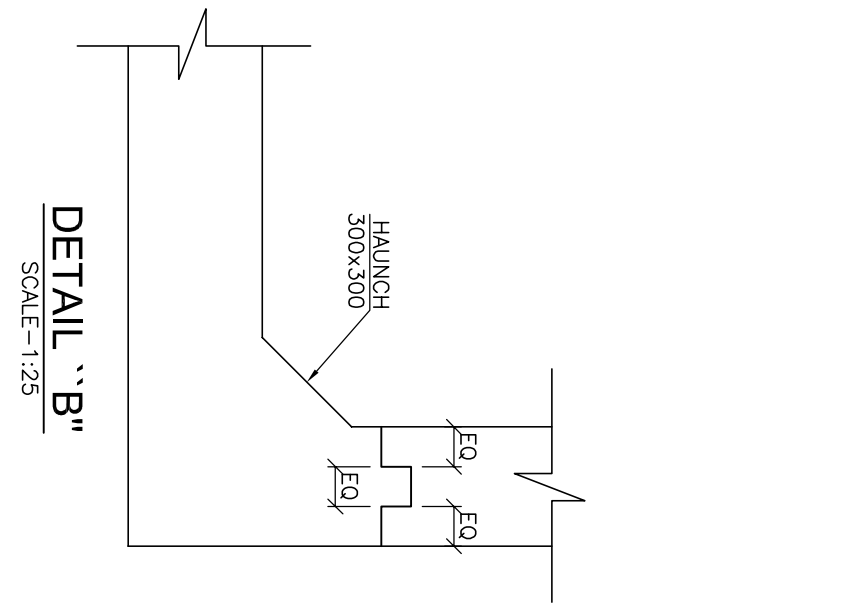
TYPICAL CROSS SECTION OF
CURTAIN WALL TYPE 2
SCALE-1:30



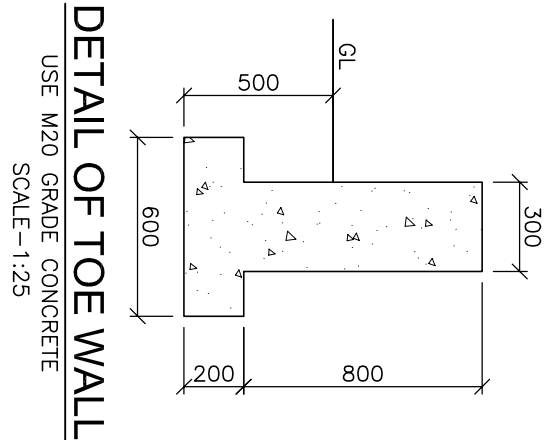
TYPICAL CROSS SECTION OF
CURTAIN WALL TYPE 1
SCALE-1:30



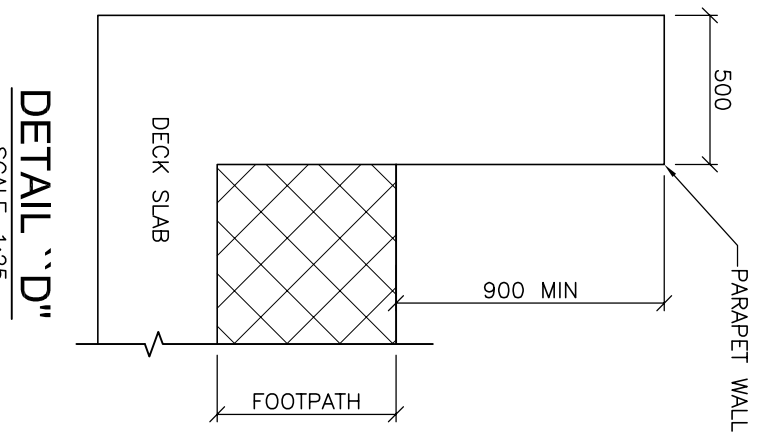
DETAIL ``E``
SCALE-1:30



DETAIL ``B``
SCALE-1:25



DETAIL OF TOE WALL
USE M20 GRADE CONCRETE
SCALE-1:25



DETAIL ``D``
SCALE-1:25

NOTES:

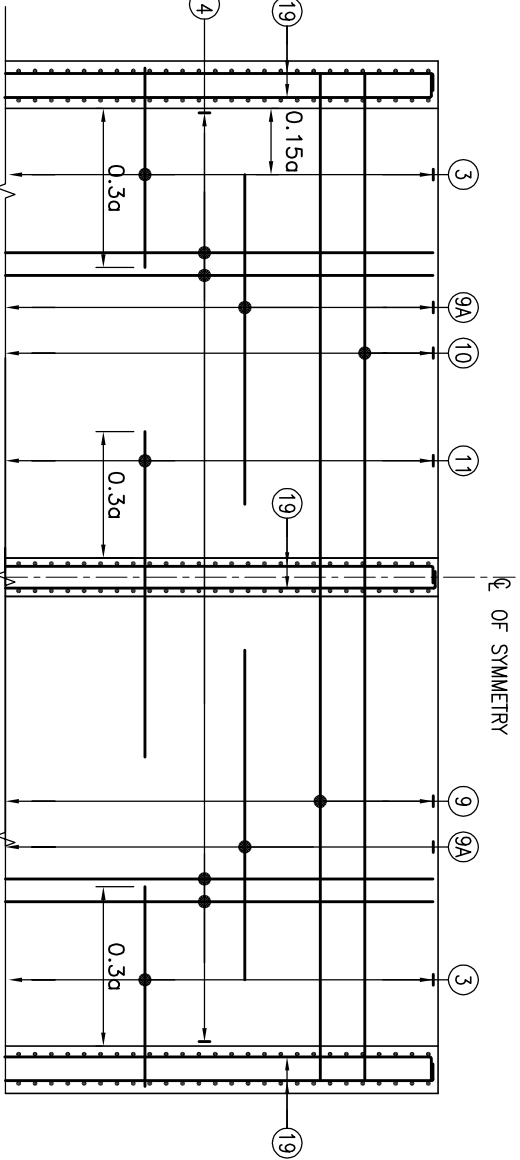
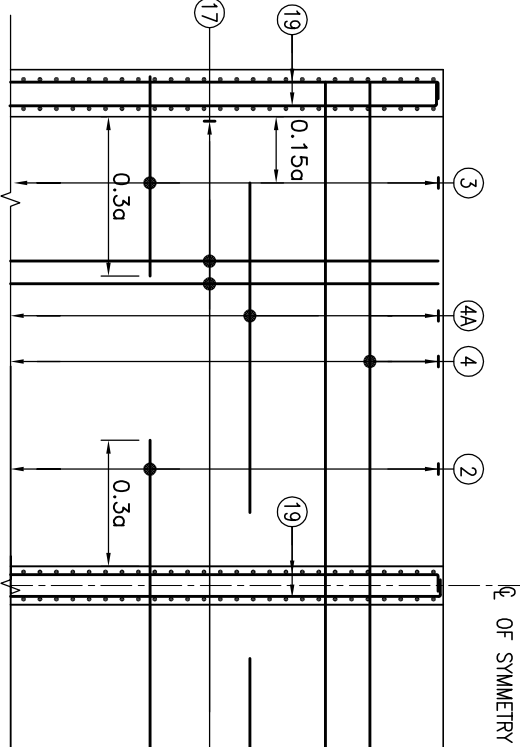
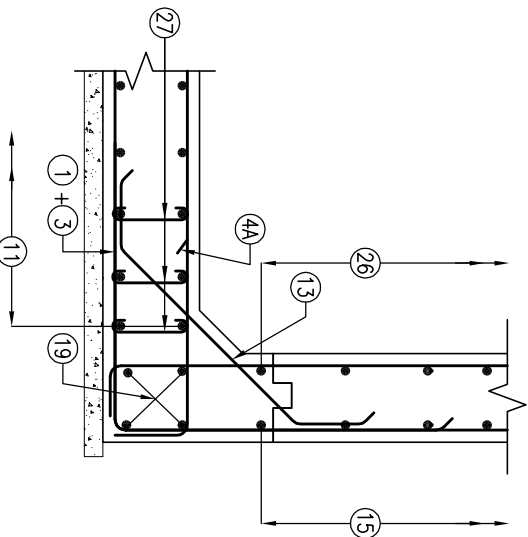
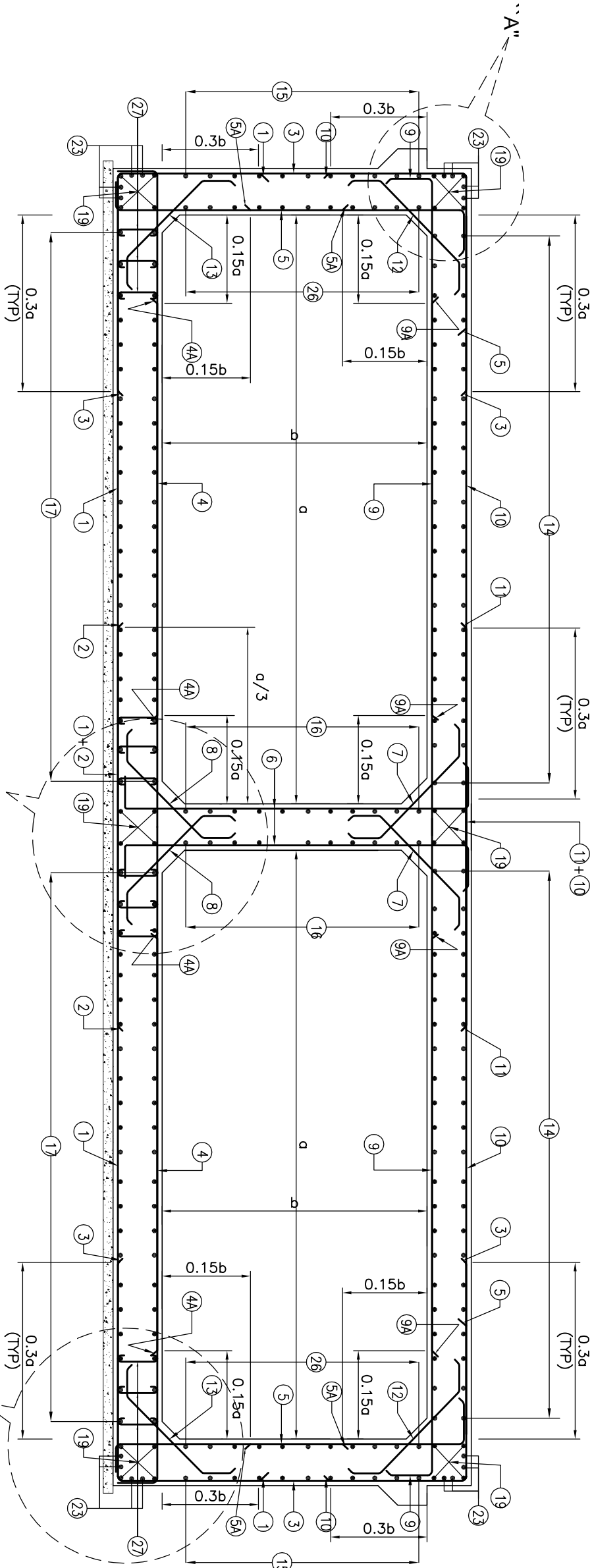
- ALL DIMENSIONS ARE IN MILLIMETRES AND LEVELS ARE IN METERS UNLESS OTHERWISE STATED. THE DRAWING SHALL NOT BE SCALED.
- THIS DRAWING IS TO BE READ IN CONJUNCTION WITH DRG. NO. NHIDCL/JS/UA/MNB/533+784-01

EXISTING CH AS PER SCHEDULE-B :534+175
DESIGN CH AS PER SCHEDULE-B :533+710
REVISED DESIGN CH :533+784

APPROVAL DRAWING

CLIENT:		PROJECT:		CONTRACTOR:		DESIGN DIRECTOR:		PROFESSIONAL CONSULTANT:		SAFETY CONSULTANT:		AUTHORITY ENGINEER:		SCALE:	
National Highways & Infrastructure Development Corporation Limited.		FOUR LANE OF JHARKHAND DELHI TO KOLKATA ROAD KM 491+800 TO 533+250 (DESIGN KM 490+800 TO KM 534+800) OF NH-37 IN THE STATE OF ASSAM UNDER SAROP ON ENGINEERING PROCUREMENT & CONSTRUCTION (EPC) MODE.		M/S KAMAC ENGINEERS PVT.LTD M/S SHIVA HARILALYA (JV).		Prateek Shrivastava		SKA TECHNOCRATS ADVISORY SERVICES PVT. LTD. NEW DELHI-110092		U/A INFRA TECH LEGATO & CO NEW DELHI - 110092		VOYANTS SOLUTIONS PVT.LTD.		AS SHOWN	
REV		DATE		DESCRIPTION		PREPARED		DESIGNED		CHECKED		APPROVED		DRG. NO. NHIDCL/JS/UA/MNB/533+784-02	
						K.R		G.R		P.S		P.S		DATE : FEB 2023	
														REVISION: R0	
														GENERAL ARRANGEMENT	
														DRAWING OF MINOR BRIDGE AT	
														REVISED DESIGN CH: 533+784	

SCHEDULE OF REINF.		
BAR MARK	DESCRIPTION	BAR SHAPE
1	16T @ 200 c/c	
2	16T @ 200 c/c	
3	20T @ 200 c/c	
4	16T @ 200 c/c	
4A	16T @ 200 c/c	
5	16T @ 200 c/c	
5A	12T @ 200 c/c	
6	16T @ 200 c/c	
7	10T @ 100 c/c	
8	12T @ 100 c/c	
9	16T @ 200 c/c	
9A	16T @ 200 c/c	
10	16T @ 200 c/c	
11	16T @ 200 c/c	
12	12T @ 100 c/c	
13	12T @ 100 c/c	
14	12T @ 175 c/c	
15	12T @ 175 c/c	
16	12T @ 175 c/c	
17	12T @ 175 c/c	
18	NOT USED	
19	12T-4x6=24 Nos.	
20	NOT USED	
21	NOT USED	
22	NOT USED	
23	12T-4x4=16 Nos.	
24	NOT USED	
25	NOT USED	
26	12T @ 175 c/c	
27	4 LEGGED BAR LINKS OF 10 @ 200 MM C/C	

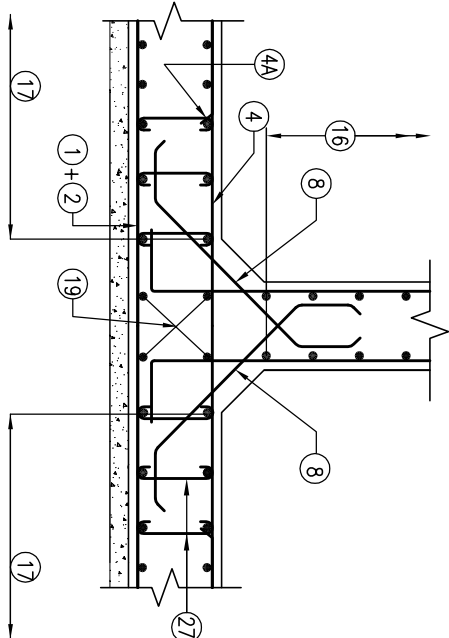
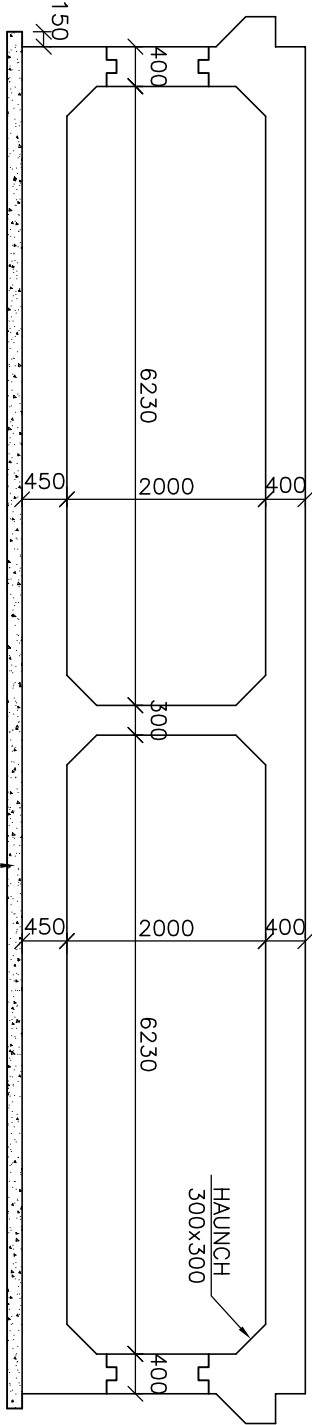
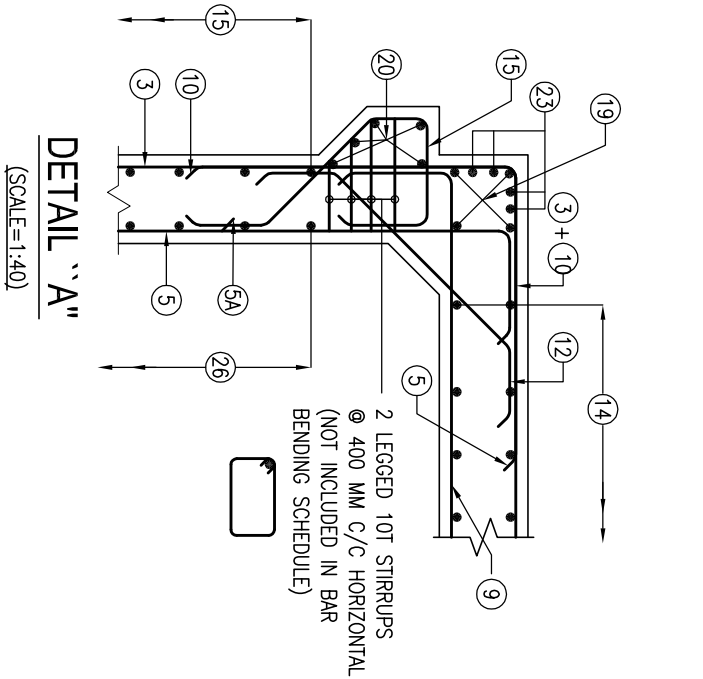


BOTTOM SLAB REINF. PLAN

SCALE=1:75

TOP SLAB REINF. PLAN

SCALE=1:75



DETAIL OF RCC

SCALE=1:75

EXISTING CH AS PER SCHEDULE-B :534+175
DESIGN CH AS PER SCHEDULE-B :533+710
REVISED DESIGN CH :533+784

NOTES:

- ALL DIMENSIONS ARE IN MILLIMETRES AND LEVELS ARE IN METERS.
- DIMENSIONS ARE NOT TO BE SCALED, ONLY WRITTEN DIMENSION TO BE FOLLOWED.
- GRADE OF CONCRETE : M30 FOR BOX.
- GRADE OF STEEL : Fe500.
- CLEAR COVER TO REINFORCEMENT SHALL BE AS FOLLOWS:-
TOP SLAB : 75MM (TOP FACE), 50MM (BOTTOM FACE)
BOTTOM SLAB : 50MM (TOP FACE), 75MM (BOTTOM FACE)
OUTER WALL : 75MM (EARTH FACE), 50MM(WATER FACE)
- ANCHORAGE LENGTH (l) SHALL BE 40x BAR DIA (φ)
- LAP LENGTH OF THE STEEL SHALL BE PROVIDE AS BELOW.
LAP LENGTH = K x l
K = 1.00 (<25% LAPPED BAR RELATIVE TO TOTAL CROSS SECTIONAL AREA)
K = 1.15 (<33% LAPPED BAR RELATIVE TO TOTAL CROSS SECTIONAL AREA)
K = 1.40 (<50% LAPPED BAR RELATIVE TO TOTAL CROSS SECTIONAL AREA)
ALTERNATIVE BAR SPLICE COUPLER CAN BE USED FOR REBAR LAPPING AND SPLICING.
- NOT MORE THAN 50% OF BARS CAN BE LAPPED AT A SECTION AND LAPS SHALL BE STAGGERED.
- FOR DETAILS OF APPROACH SLAB, HAND RAILING RETAINING WALL, REFER SEPARATE MISCELLANEOUS DRAWING.
- SBC OF SOIL BELOW THE BOX STRUCTURE SHALL NOT BE LESS THAN 15 T/sq.m.

APPROVAL DRAWING

CLIENT:		PROJECT :		CONTRACTOR:		DESIGN DIRECTOR :		PROOF CONSULTANT :		SAFETY CONSULTANT :		AUTHORITY ENGINEER :		SCALE:	
National Highways & Infrastructure Development Corporation Limited.		FOUR LANE OF JHARKH TO DELHIA ROAD 491+800 TO 534+250 (DESIGN KM. 490+800 TO KM. 534+800) OF NH-37 IN THE STATE OF ASSAM UNDER SAROP ON ENGINEERING PROCUREMENT & CONSTRUCTION (EPC) MODE.		M/S KAMAC ENGINEERS PVT.LTD M/S SHIVA HARILALYA (JV).		Prateek Sivastava		SKA TASPIL TECHNOCRATS ADVISORY SERVICES PVT. LTD. NEW DELHI-110092		U/A INFRA TECH LEGATO & CO NEW DELHI - 110092		VOYANTS SOLUTIONS PVT.LTD.		AS SHOWN	
REVISION		DATE		DESCRIPTION		PREPARED		DESIGNED		CHECKED		APPROVED		DATE : FEB 2023	
						K.R		G.R		P.S		P.S		REVISION: R0	
														REINFORCEMENT DETAILS OF MINOR BRIDGE (SERVICE ROAD) AT REVISED DESIGN CH: 533+784	